

A decorative white card with floral patterns and flowers. The card features a colorful floral border in the top-left corner and a larger floral pattern along the right edge. The text is centered on the card. The card is placed on a wooden surface, surrounded by various flowers including purple lilies, yellow tulips, and a red chrysanthemum.

**Interactive Internet  
Literacy for EFL  
Teachers in Egypt**

# Interactive Internet Literacy for EFL Teachers in Egypt

**Ismail Fayed**

Integrated English Language Program - II

*E-mail: [ifayed@aedegypt.org](mailto:ifayed@aedegypt.org)*

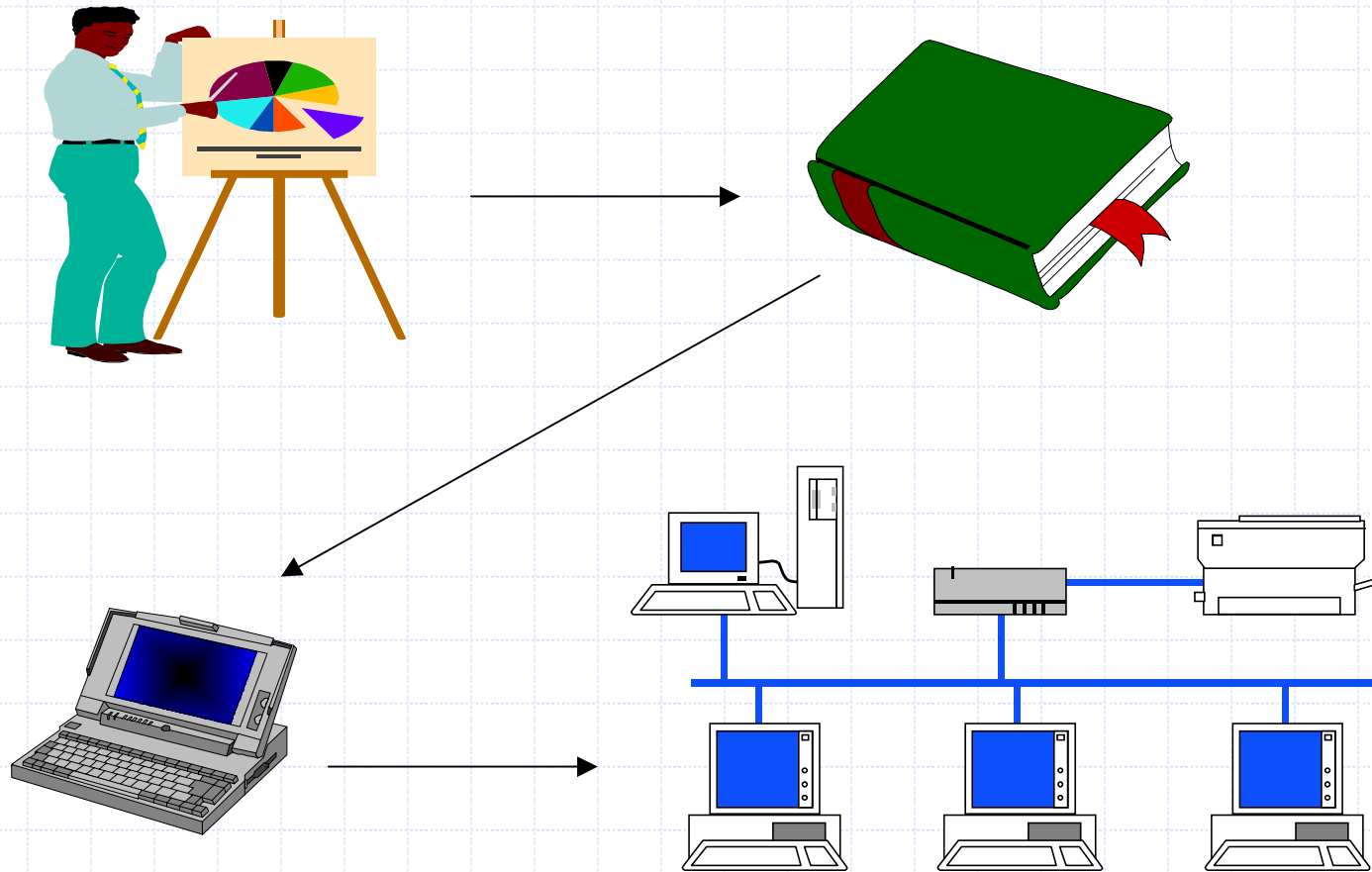
:Download this handout from the following URL

<http://www.yahogroups.com/files/eltegypr/handouts/auconference2001/ismail.htm>

:Or

<http://www.geocities.com/interactiveinternetliteracy/index.html>

# Knowledge Development



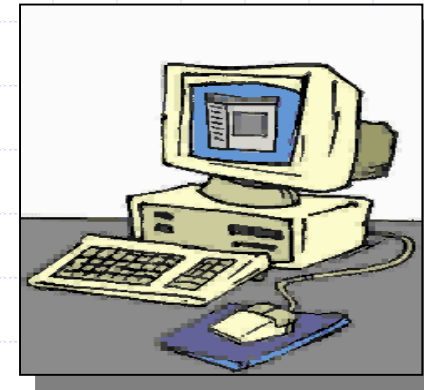
# Goals & Objectives of Using The Internet :Technology in Shools

- Explore the world ♦
- :Improve communication and cooperation among ♦
  - Students ♦
  - Teachers ♦
  - Both ♦
- Motivate most students to participate and respond ♦
- Encouraging autonomous learning among students ♦
- Exchanging resources ♦
- Assist in self-learning and error correction ♦



## **:Barriers**

- The use of technology-aided activities need to be carefully monitored** ◆
- Lack of both the logistic and human experts in many of the developing countries** ◆
- Lack of technical experience and knowledge** ◆
- You can not rely on the net all the time** ◆
- The negative attitude of some faculty members toward technology** ◆
- !Students' Technophobia** ◆
- !!Teachers' Technophobia** ◆



(-: bJã ~ãî^ Áí á á ěë⇒ âÇpâãë (1))

:**Objectives:** E-mail can give **learners** some opportunities to

**Interact with other learners and teachers** ✉

**Communicate with people from different cultures and from far distant areas and countries** 📧

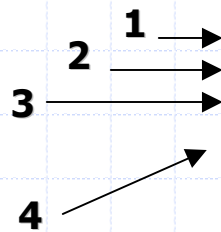
**Encourage groupwork, team-spirit and involvement in different communities** ✉

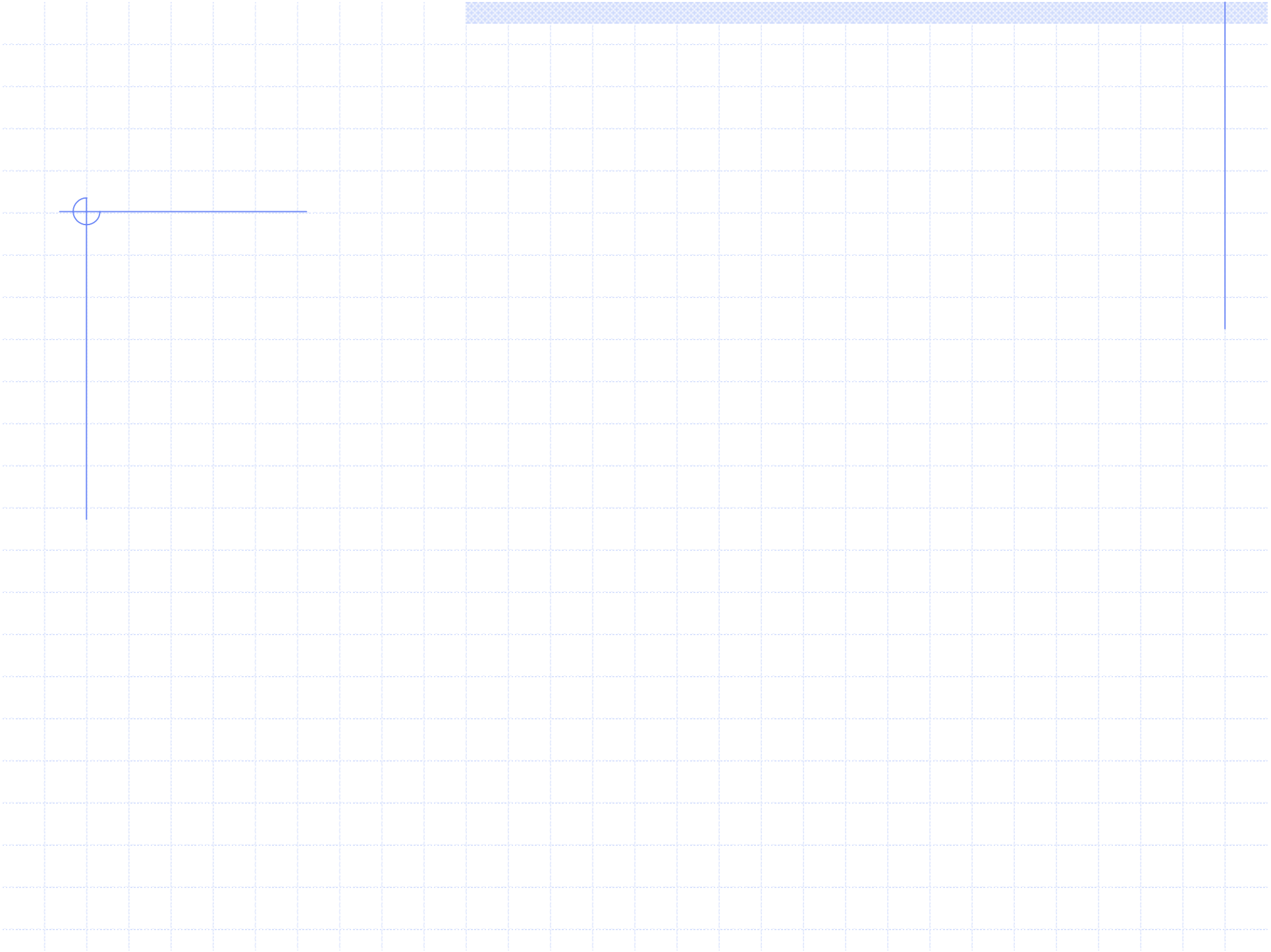
**Think critically and have the chance to express themselves to others and develop their characters in a positive way** 📧

# ?What is an E-mail Service

## ?What are the different parts of an E-mail

- [Sender table, [**from** 1
- [Recipient's e-mail (individual or group), [**To** 2
- [Subject of the message, [**Subject** 3
- [Body text [ **Message** 4







# You have to complete a registration form before using your new email account

Welcome to Yahoo! - Microsoft Internet Explorer

File Edit View Favorites Tools Help

Back Stop Refresh Home Search Favorites History Mail

Search Guest Toolbar Sign In My Yahoo! News Entertainment

Address http://mail.yahoo.com/condlg/eval\_register?info=welcome%20to%20yahoo%20mail&url=http://mail.yahoo.com/condlg/eval\_register

Links Call EMail Instant Mess Online Workshops Projects Downloads Writing

**YAHOO!**  
Mail

Sign up for your Yahoo! ID with Mail [Already have an ID? Sign In](#)

Get a Yahoo! ID and password for free access to Yahoo! Mail and all other personalized Yahoo! services.

Yahoo! ID:  @yahoo.com  
(example: "12345678" or "12345678")

Choosing your ID  
You will use this information to access Yahoo! each time. Capitalization matters for your password.

Password:

Re-type Password:

If you forget your password, we would identify you with this information.

Security Question:

Your Answer:

Birthday:   (Month Day, Year)

Recalling your password  
This is our only way to verify your identity. To protect your account, make sure "your answer" is **memorable for you**.

Done Internet

1

Welcome to Yahoo! - Microsoft Internet Explorer

File Edit View Favorites Tools Help

Back Stop Refresh Home Search Favorites History Mail

Search Guest Toolbar Sign In My Yahoo! News Entertainment

Address http://mail.yahoo.com/condlg/eval\_register?info=welcome%20to%20yahoo%20mail&url=http://mail.yahoo.com/condlg/eval\_register

Links Call EMail Instant Mess Online Workshops Projects Downloads Writing

Current Email:  (Optional) but hard for others to guess

First Name:  Last Name:

Language & Content:  English - United States

Zip/Postal Code:  Gender:

Occupation:  (select occupation)

Industry:  (select industry)

People Search Listing:  List my new Yahoo! Mail address for free  
Listing includes real name, city, state, and country.

Contact me occasionally about special offers and Yahoo! features

Interests (optional):

Entertainment  Business

Home & Family  Computers & Technology

Health  Personal Finance

Music  Small Business

Customizing Yahoo!  
Yahoo! will try to provide more relevant content and advertising based on the information collected on this page and on the Yahoo! products and services you use.

Done Internet

2

eltegypt@yahoogroups.com

Account  
name  
(user name)

Means “**at**” and it refers to  
the server that provides  
this Service & the server’s  
name comes next to it

Internet  
service  
Provider

The kind of  
organization or  
Institution that  
provide the  
service

# E-mail Projects for ELT

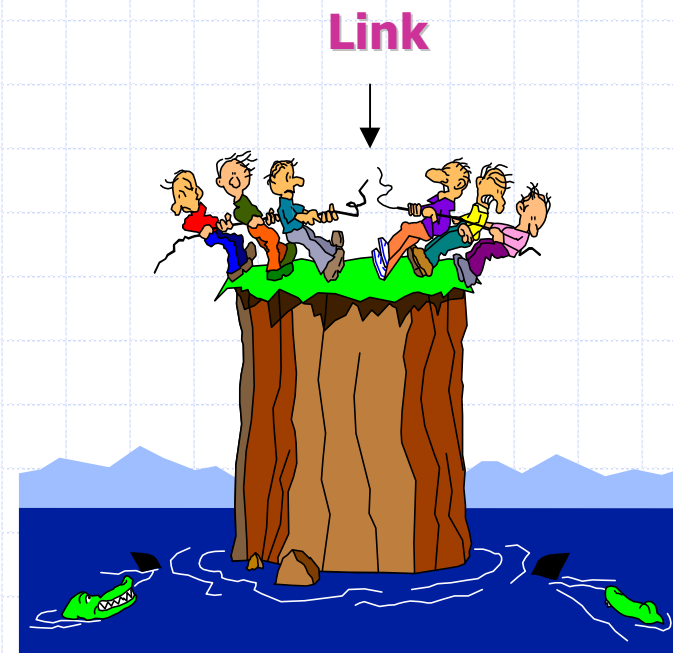
Free web-Based learning ♦  
,environment for classrooms  
distance learning programs and  
collaborative academic projects

pen-pals activities ♦

e-lists (egroups) for open ♦  
educational discussions

Interests sections ♦

Newsletters ♦



# Surfing for Educational Resources (2)

## ?What is a URL (www) address

1 2 3  
<http://www.mcps.k12.us/departments/isa/elit/evalform.htm>

Tells you it is a web page ♦

(Many domain names start with www ( World Wide Web) ♦

Name of business or organization ♦

Tells you what kind of site ♦

Tells you where in the computer the page stored ♦

The name of the specific page ♦

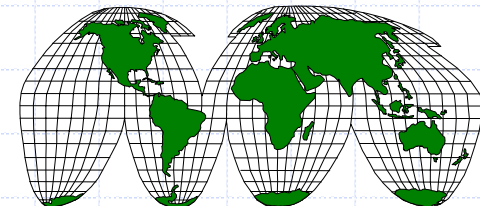
( "Adopted from PeterSchwarz, "Montgomery Country Public Schools) ♦

## Following web links and Hyberlinks: There are :three kinds of links

- Internal links
- Links to new web pages
- [favourite sites in a web](#)

### :Using search engine

- **Topic** word/ question
- Assisting **keywords**



# Tips for specifying and limiting your search

Using **AND** ...makes the searching engine looks for only those  
.items that use both your words

.**OR** .....find items that use either words

.**NOT** .....to limit your searching results

Adding (+) or (-) to your search. (make sure there is NO  
.space between the (+) and the word that must be found

Using [ “ ” ]around the words means all of these words must  
.be found in that order

Using [ \* ] after a word allows you to get all the possible  
.varities of a word

Choose one proper search engine for that topic you are looking  
.for

Choose a second search engine to find more information on  
.your topic

## Works Cited

After using a source from a web site, use  
:this form

**Title** of web page •

(**Author** ( if available •

**Source** of information •

Last time page was **updated** •

**Date of downloading** file or information •

(**URL** or (www •

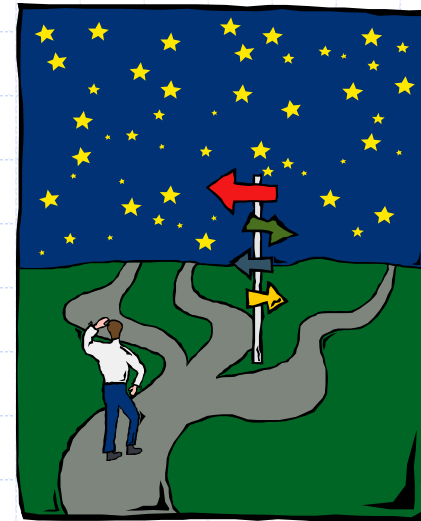
a Éî Éä éää Ö-óçì ê† ï å ðçì Å~íäçå~ät ÉÄ (Υ)  
m-ÖÉ

## A. Before you start working on your new web : You try to

**Clarify the objective and audience of your web** ◆

**Outline your web links** ◆

**Diagram the links** ◆





## B. Build your web in ten easy steps

**kÊi** ãi ÉÄ=é~ÖÉ -\

ÂêÉ~íÉ=óçì êï ÉÄ=ÂçáíÉáí -γ

**cçêã** ~í ãi Éñí ã Ç=ãã ~ÖÉë -γ

.^ ÇÇ=ããã ~íáçáI=ëçì á ÇëI=Ä~Ââ Öëçì á Ç=Äçäçêë= ÉíÄ -ε

^ ÇÇ=íÜÉ=ãããêë -o

íç ã=ãÉi =r o i ■

íç ã=ÑäÉ=ãã ã ÜÉ=ë~ã Éï ÉÄ=é~ÖÉ ■

**p~î ää Ö** ãi ÉÄ=é~ÖÉ -γ

**mêÊi áÊi** =óçì êï ÉÄ -V

^ ÇÇ=í~ÄäÉë ã=ë=áÉÉÇÉÇ -Λ

**c ää Ç** ã= =Üçëí=ëÉêí Éê= ã Ç=ëáÖà ãi é=óçì êï ÉÄ=ÄÄçì áí -9

[www.Geocities.com](http://www.Geocities.com)

[www.prohosting.com](http://www.prohosting.com)

[www.netfirms.com](http://www.netfirms.com)

**r éäç~Ç** =óçì êï ÑäÉë -\ ♦

